

**Placide Ory
(1853-1920)**

Placide Ory, son of Lezin & Melanie Cambre Ory, was a native of St. John the Baptist Parish born on January 29, 1853, and a resident of Lions, LA. Placide's paternal grandparents were Jean Louis Ory (1792-1819) and Genevieve Chauffe (1801-1865) of St. John Parish. His maternal grandparents were Mathias Cambre (1780-1831) and Charlotte Perilloux (1781-1853), both also from St. John. He married Adora Chauffe (1859—1922) on April 27, 1880 in Napoleonville, LA. Her parents were Thomassin Chauff & Cleonise Maillet of Ascension Parish. Placide and Adora's home was on the San Francisco Plantation site about midway between the Albert Millet property and Frisco School on the River Road. Placide, with his brothers, Lezin, Felicien, Emygde and John L, entered the sugar industry following the Civil War. "With ambition, courage and inflexible will, they began by purchasing Idaho Plantation, located in Lions, LA." By 1911 the brothers owned 5,000 acres which included two sugar mills. In 1920, John L, Lezin and Placide died (within six weeks of each other). Emygde died in 1928, but the San Francisco Planting and Manufacturing Co. "remains a monument to their memory under the able management of Sidney J. Levet and J. M. Ory, son-in-law and son, respectively of the brothers."

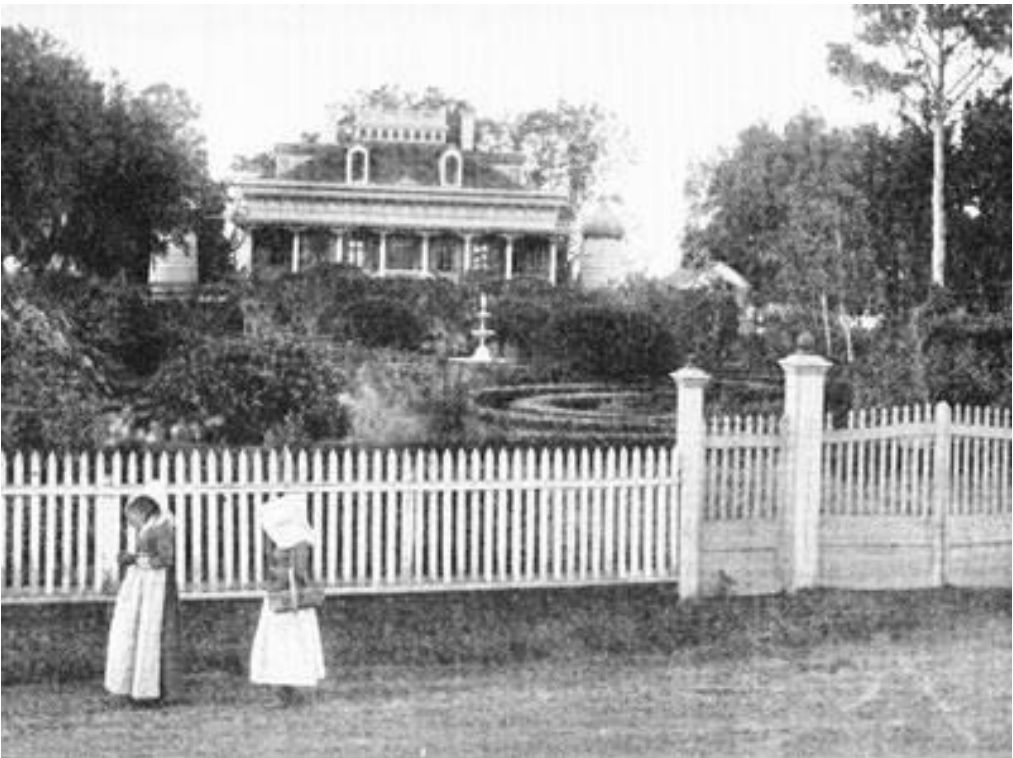
Placide and Adora Chauffe Ory had four children: Thomas F. (1881-1952) who never married; George E. (1882-1938) m. Bertha M. Millet and had 9 children; Joseph E. (1883-1962) m. Katherine White and had 4 children; and Dora (1885-1945) m. Fernand A. Keller and also had 4 children. Placide died April 3, 1920, and Adora died November 23, 1922. Both are buried in St. Peter Catholic Cemetery.

Sources:

A History of St. John the Baptist Parish, p. 85

Fortier, Alcee, *Louisiana: Comprising Sketches of Parishes, Towns, Events, Institutions, and Persons, Arranged in Cyclopedic Form, volume 3*, Madison, Wis.: Century Historical Association, 1914, pp. 715-716.

The Ory Story – Alsace-Lorraine to America, compilation by Margie R. Pearce, 2003, pp. 539-562.



San Francisco Plantation

Picture taken before 1909 before the levee was moved back.
The Ory Brothers paid armed guards to patrol the levee to prevent the house
from being demolished by the
Corps of Engineers.